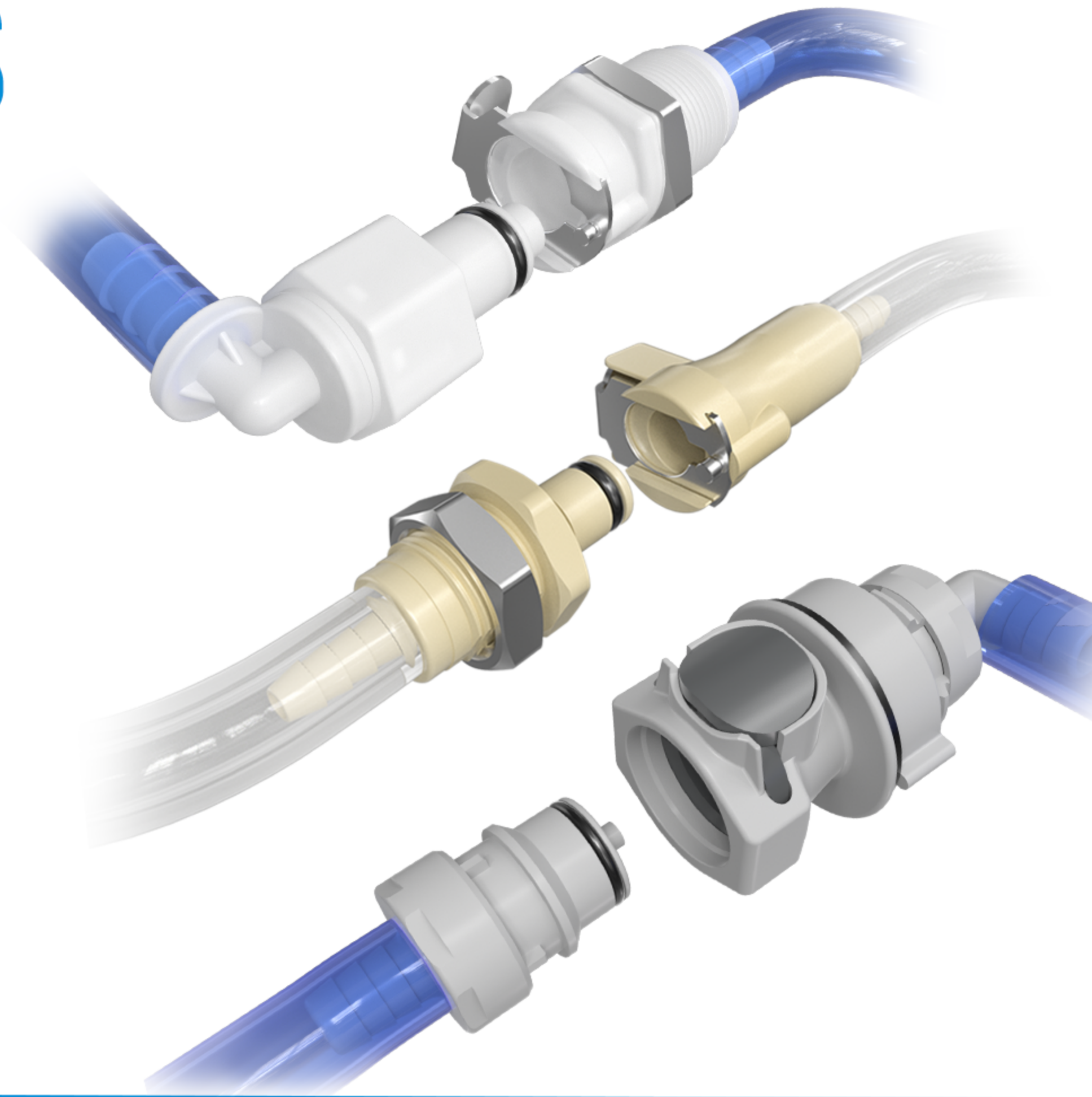


# QUICK DISCONNECT COUPLINGS

The Q-Series consists of Q20 series with 1/8" flow, Q40 series with 1/4" flow, and Q60 series with 3/8" flow, which are fully interchangeable with other thumb-latch type couplings.



## SUITABLE FOR A WIDE RANGE OF APPLICATIONS

TUBE ID \_\_\_\_\_

1/16" 1/8" 3/16" 1/4" 5/16" 3/8" 1/2" 3/4"

THREAD \_\_\_\_\_

1/8NPT 1/4NPT 3/8NPT 1/2NPT

MATERIAL \_\_\_\_\_

Acetal Polypropylene

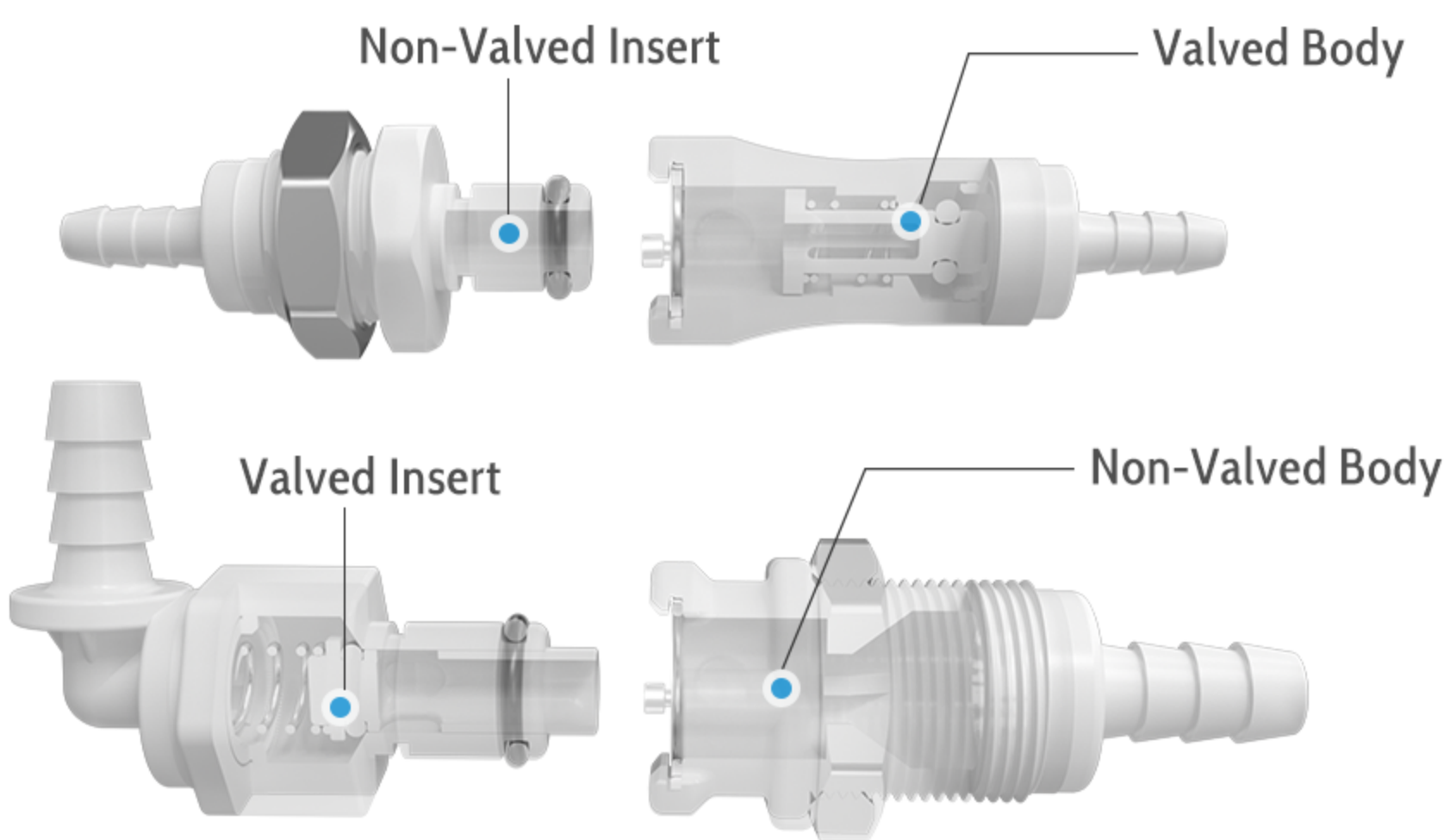
O-RING \_\_\_\_\_

Buna-N EPDM FKM

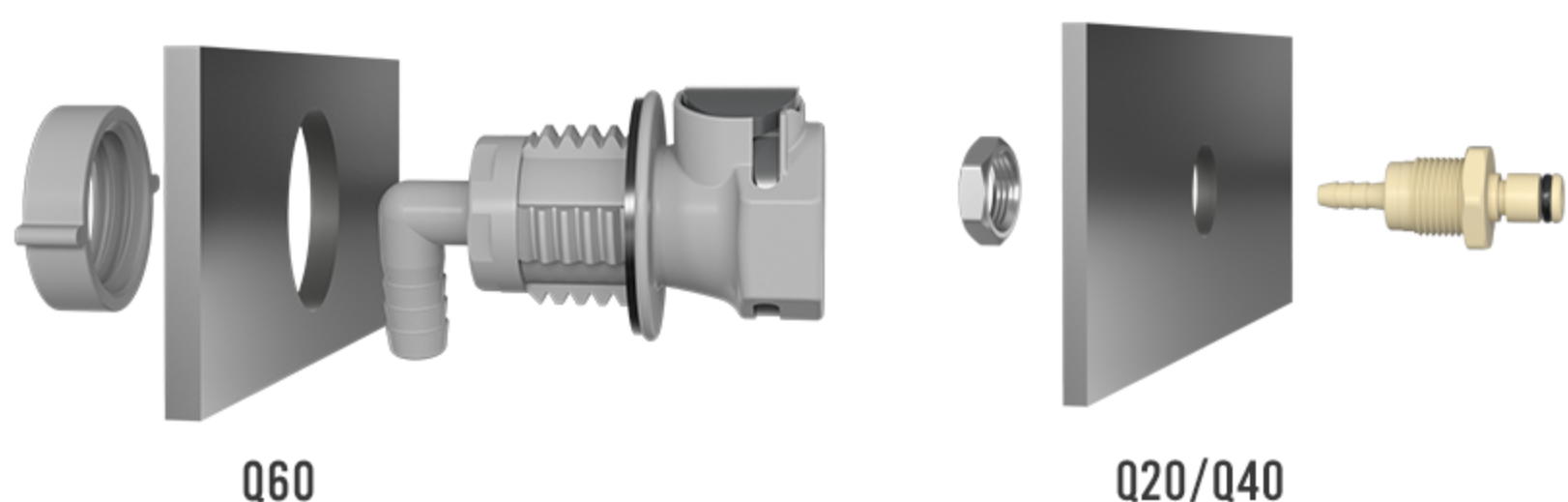
SHAPE \_\_\_\_\_

In-Line Elbow

VALVED \_\_\_\_\_



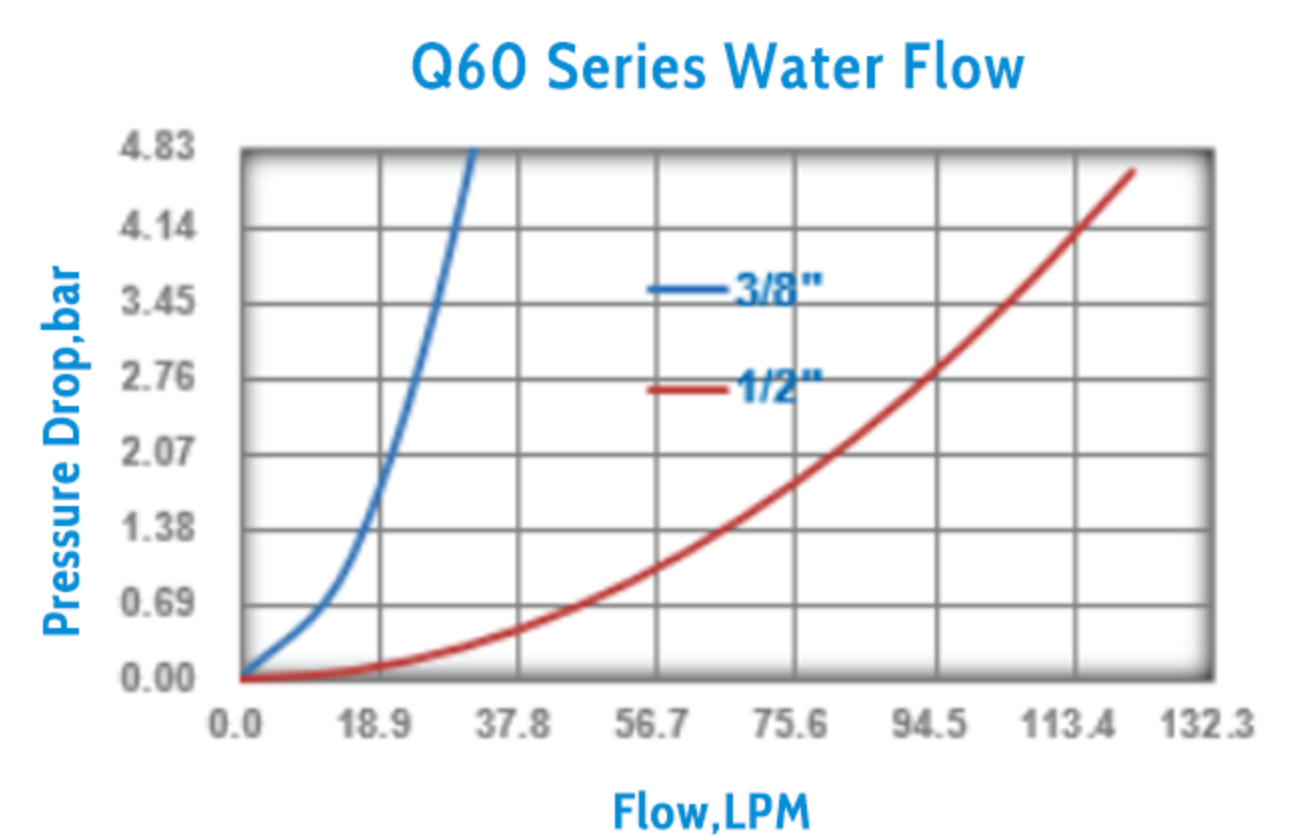
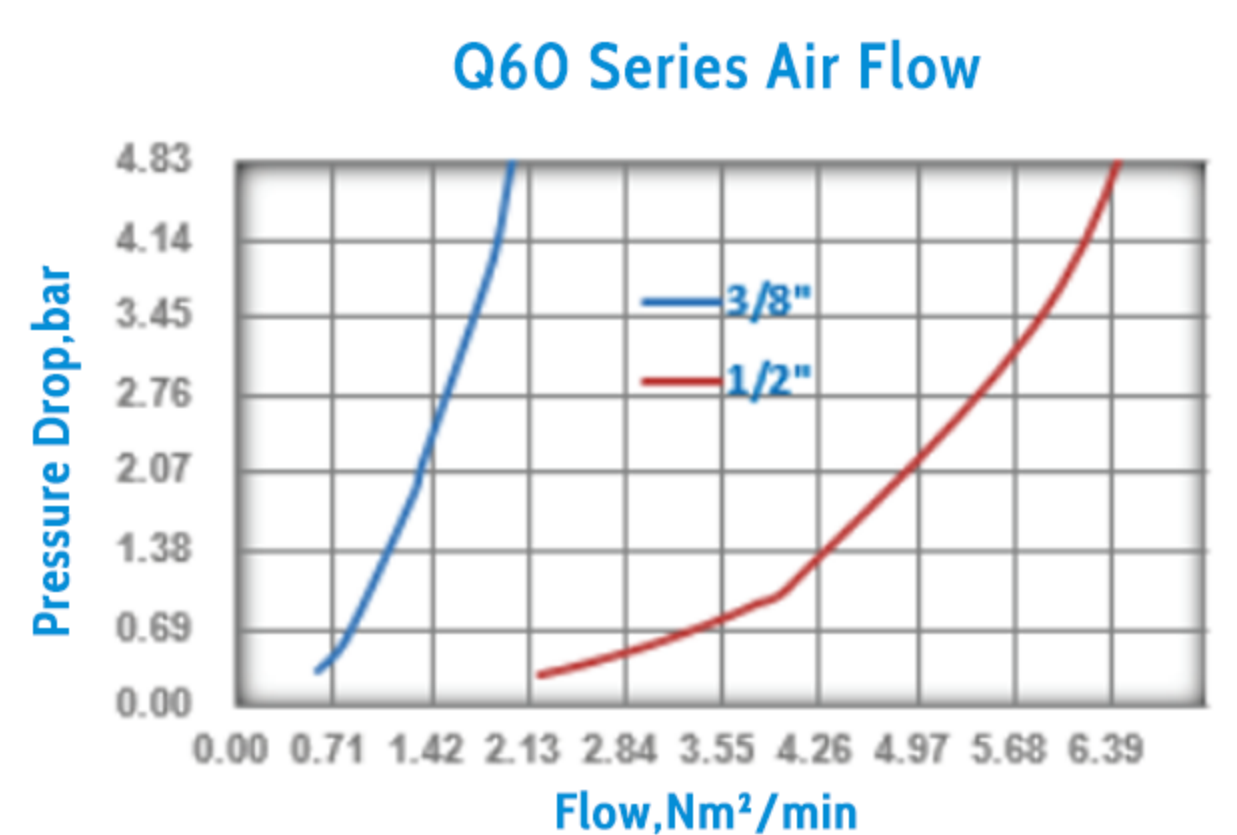
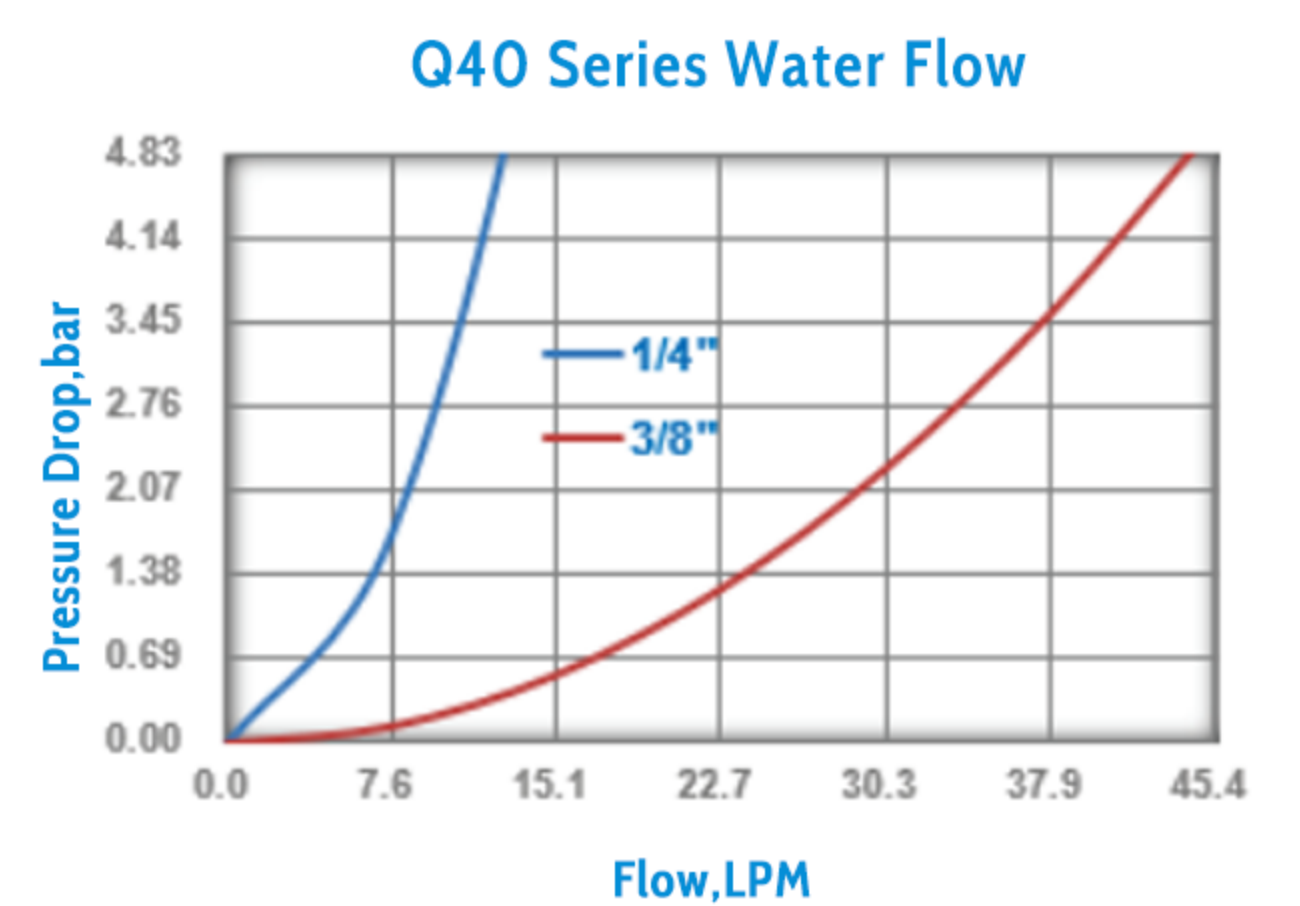
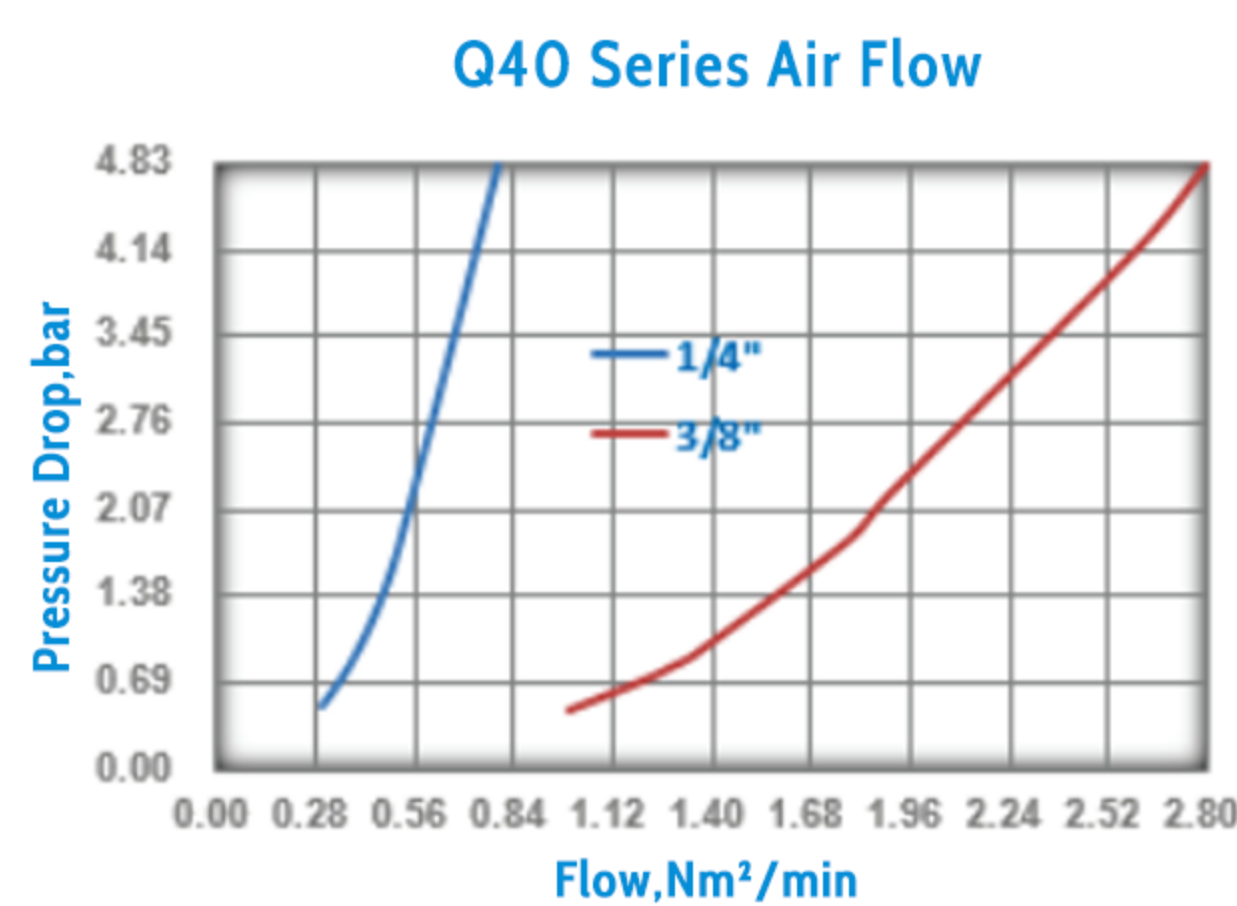
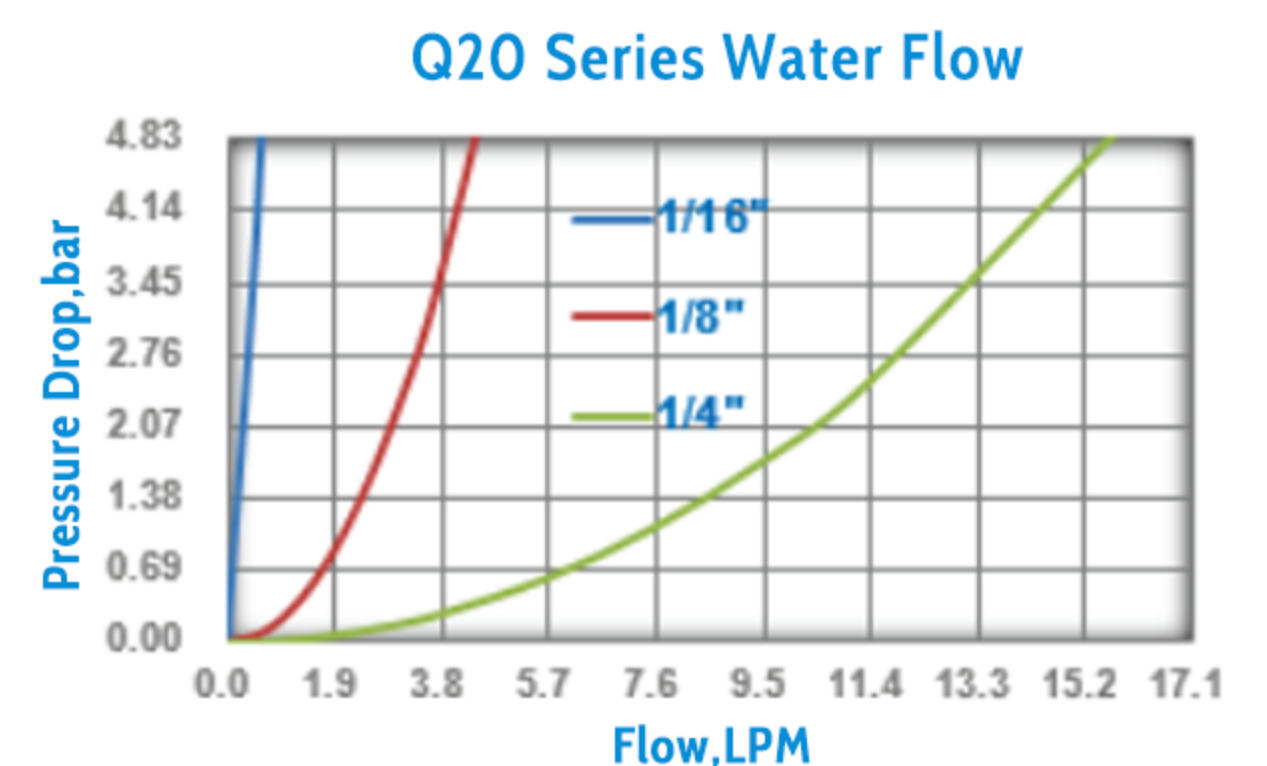
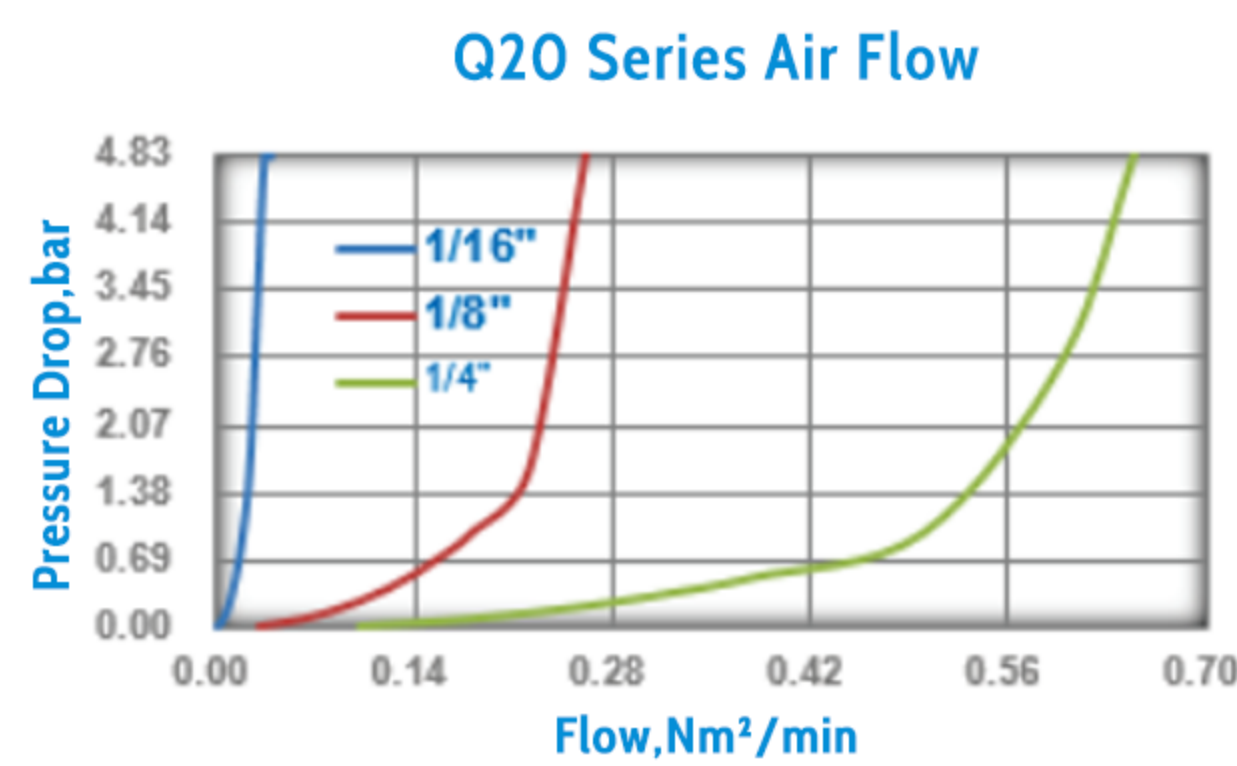
PANEL MOUNT \_\_\_\_\_



## FEATURES

- INTEGRAL TERMINATIONS** *No weld, fewer leak points, faster installations*
- EASY TO USE** *One-hand connection/disconnection*
- RELIABLE CONNECTION** *Clicks when connected*
- CHEMICAL RESISTANCE** *Several material options with good chemical resistance*

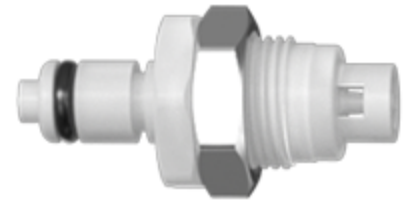
## CV GRAPHS



# Q SERIES QUICK DISCONNECT CONNECTORS

## Q20 SERIES

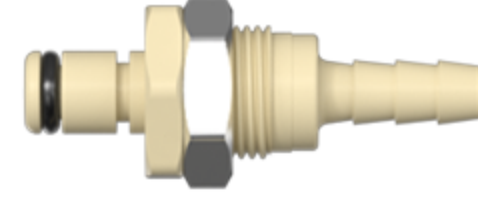
INSERTS



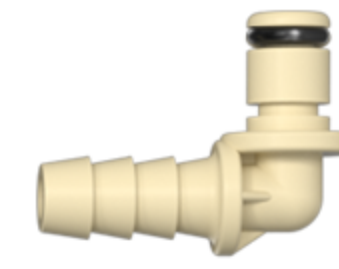
ACETAL  
Q2001-PMV-SACN



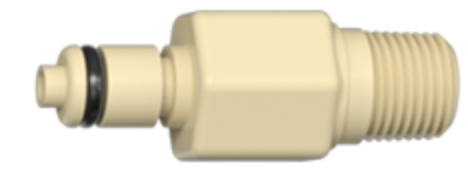
ACETAL  
Q2002-PNV-LACN



POLYPROPYLENE  
Q2003-PMX-SPPE

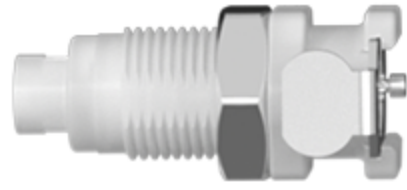


POLYPROPYLENE  
Q2004-PNX-SPPE



POLYPROPYLENE  
Q2018N-PNV-SPPE

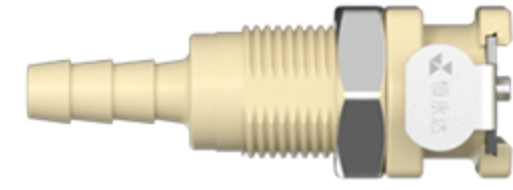
BODIES



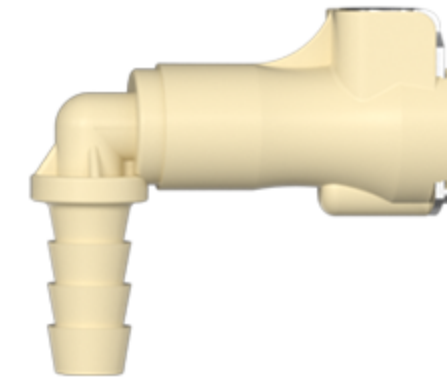
ACETAL  
Q2001-SMV-SACN



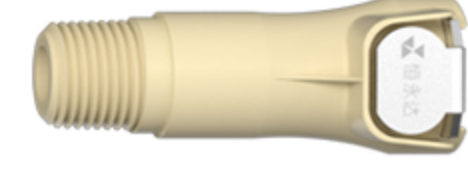
ACETAL  
Q2002-SNV-LACN



POLYPROPYLENE  
Q2003-SMX-SPPE



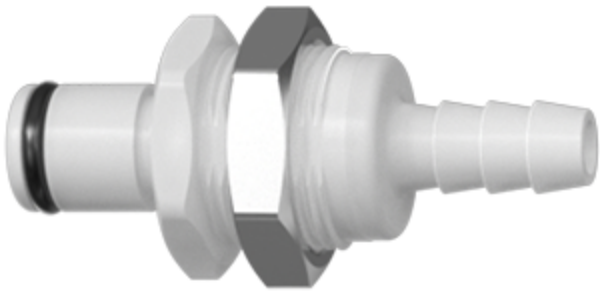
POLYPROPYLENE  
Q2004-SNX-LPPE



POLYPROPYLENE  
Q2018N-SNV-SPPE

## Q40 SERIES

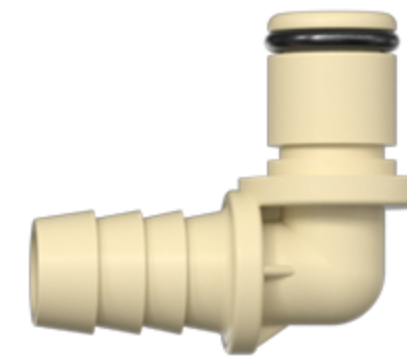
INSERTS



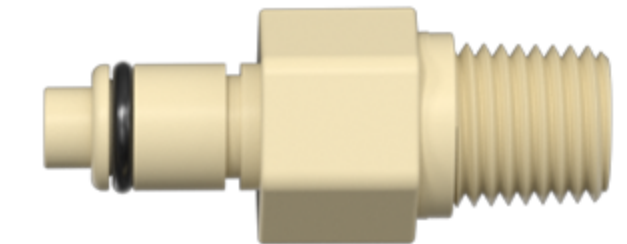
ACETAL  
Q4004-PMX-SACN



ACETAL  
Q4005-PNX-SACN

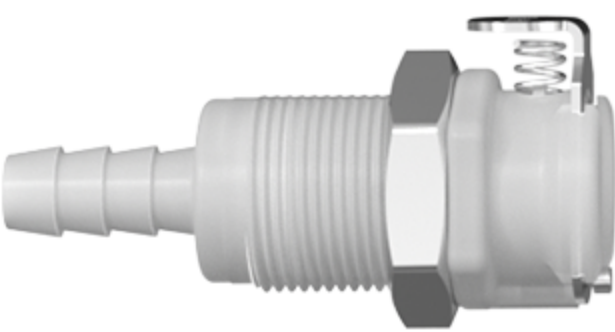


POLYPROPYLENE  
Q4006-PNX-LPPE



POLYPROPYLENE  
Q4014N-PNV-SPPE

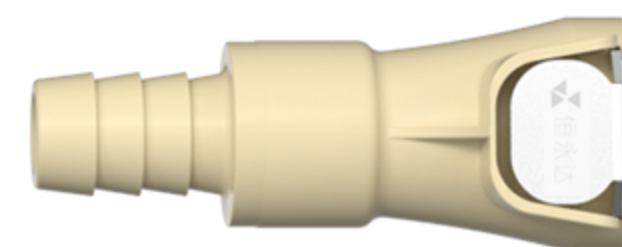
BODIES



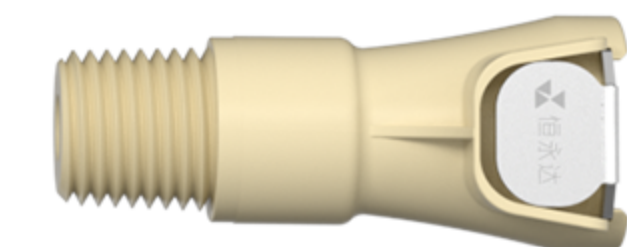
ACETAL  
Q4004-SMX-SACN



ACETAL  
Q4005-SNX-SACN



POLYPROPYLENE  
Q4006-SNV-SPPE



POLYPROPYLENE  
Q4014N-SNV-SPPE

## Q60 SERIES

INSERTS



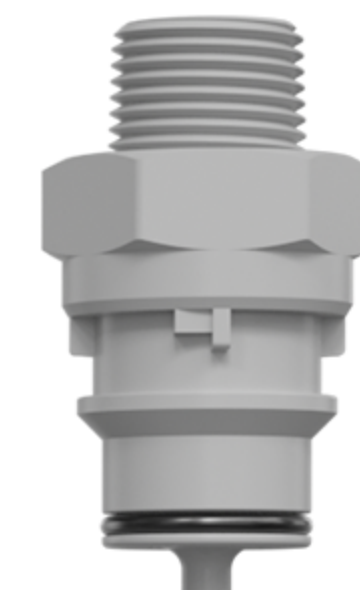
POLYPROPYLENE  
Q6006-PNV-LPPE



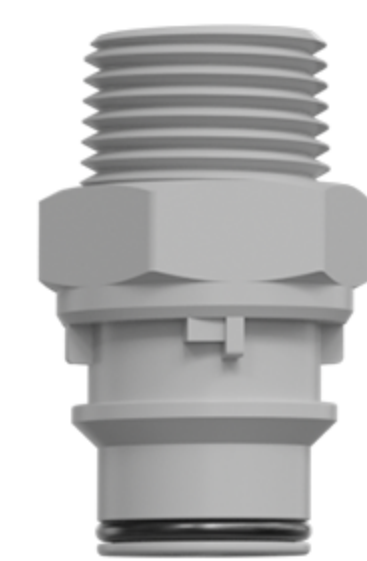
POLYPROPYLENE  
Q6008-PNV-SPPE



POLYPROPYLENE  
Q6012-PNX-SPPE



POLYPROPYLENE  
Q6038N-PNV-SPPE



POLYPROPYLENE  
Q6012N-PNX-SPPE

BODIES



POLYPROPYLENE  
Q6006-SMV-LPPE



POLYPROPYLENE  
Q6008-SNX-SPPE



POLYPROPYLENE  
Q6012-SMX-SPPE



POLYPROPYLENE  
Q6038N-SNX-SPPE



POLYPROPYLENE  
Q6012N-SNV-SPPE

**Shenzhen Foreach Technology Co., Ltd.**

Website  
www.foreachtek.com

E-mail  
sales2@foreachtek.com

Telephone  
+86-755-8655-3831

Address  
1301, Building 2, Yufengda Industrial Park, 1008 Guangqiao Road, Guangming District, Shenzhen, P.R.China



www.foreach.com